

Watson Manor Apartments

Residential Rentals
577 East 8th Avenue, Vancouver

RENTS:

1 Bedroom
starting from \$895

2 Bedroom
starting from \$1,275

To view available units:

**OPEN HOUSES WILL BE SCHEDULED IN
OCTOBER 2012**

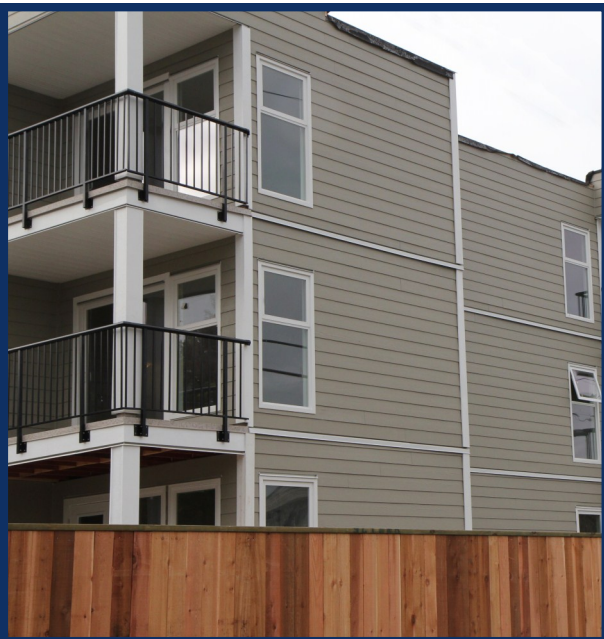
**To be included on the priority viewing
list please provide your contact info to:**

Becky Ferguson

Property Assistant

Telephone: 604-453-4834

Email: watsonmanor@carreramc.com



UNIT	AREA		DESCRIPTION
101	562	1 bed	South facing garden unit
102	548	1 bed	South facing garden unit
103	753	2 bed	South facing garden unit - No D/W
201 *	562	1 bed	North facing garden unit
202 *	866	2 bed	N/E facing - Corner unit - No D/W garden
203	568	1 bed	East Facing No D/W garden unit
204	737	2 bed	S/E Corner garden unit
205	576	1 bed	Separate entrance
206	592	1 bed	South facing
207	592	1 bed	South facing
208	771	2 bed	S/W Corner unit
209	613	1 bed	North - Corner unit - Large unit
210	613	1 bed	North facing - No D/W
211	601	1 bed	North facing
212	603	1 bed	North facing garden unit
301 *	562	1 bed	North facing - Some View
302 *	866	2 bed	N/E facing - Corner unit - No D/W
303	568	1 bed	East Facing
304	737	2 bed	S/E Corner Unit
305	602	1 bed	South facing
306	592	1 bed	South facing
307	592	1 bed	South facing
308	771	2 bed	S/W Corner Unit - Large unit
309	613	1 bed	N/W Corner Unit - View
310	613	1 bed	North facing -Some View
311	601	1 bed	North facing -Some View
312	603	1 bed	North facing -Some View
401 *	562	1 bed	North facing - Great View
402 *	866	2 bed	N/E facing - Corner unit - View - No D/W
403	568	1 bed	East Facing
404	737	2 bed	S/E Corner Unit
405	602	1 bed	South facing
406	592	1 bed	South facing
407	592	1 bed	South facing
408	771	2 bed	S/W Corner Unit - Large unit
409	613	1 bed	N/W Corner Unit - Great View
410	613	1 bed	North facing - Great View
411	601	1 bed	North facing - Great View
412	603	1 bed	North facing - Great View

* Units custom designed for mobility challenged and wheelchair bound persons

Watson Manor is located in the Mt. Pleasant Neighbourhood of Vancouver, close to transportation, schools and shopping

For more information please contact:

Carrera Management Corporation
#104 - 375 Water Street, Vancouver, BC V6B 5C6
Telephone: 604-453-4834
www.Carreramc.com

